

PROGRESS WITH IMPLEMENTING THE ICPD PROGRAMME OF ACTION AND POPULATION POLICY FOR SOUTH AFRICA 1994-2009

Minmec Meeting

27 November 2009



social development

Department:
Social Development
REPUBLIC OF SOUTH AFRICA

Purpose and process of review

- To evaluate progress with the implementation of the Population Policy and ICPD, as well as teasing out shortcomings and challenges in order to improve development efforts;
- Thematic background papers prepared by staff in the CDPD in collaboration with researchers and other government officials.
- Review is part of a wider process of developing a more concerted strategy to address national population and development concerns to inform priorities that will guide the development of the next five year strategy (2009-2014)

Thematic background papers:

Activities covered in more detail in 8 thematic background papers available at www.population.gov.za

1. Poverty and inequality
2. Migration and urbanisation
3. Families, households and children
4. HIV and AIDS
5. Population, Environment and Development
6. Sexual and Reproductive Health and Rights
7. Youth
8. Gender Equality and Equity



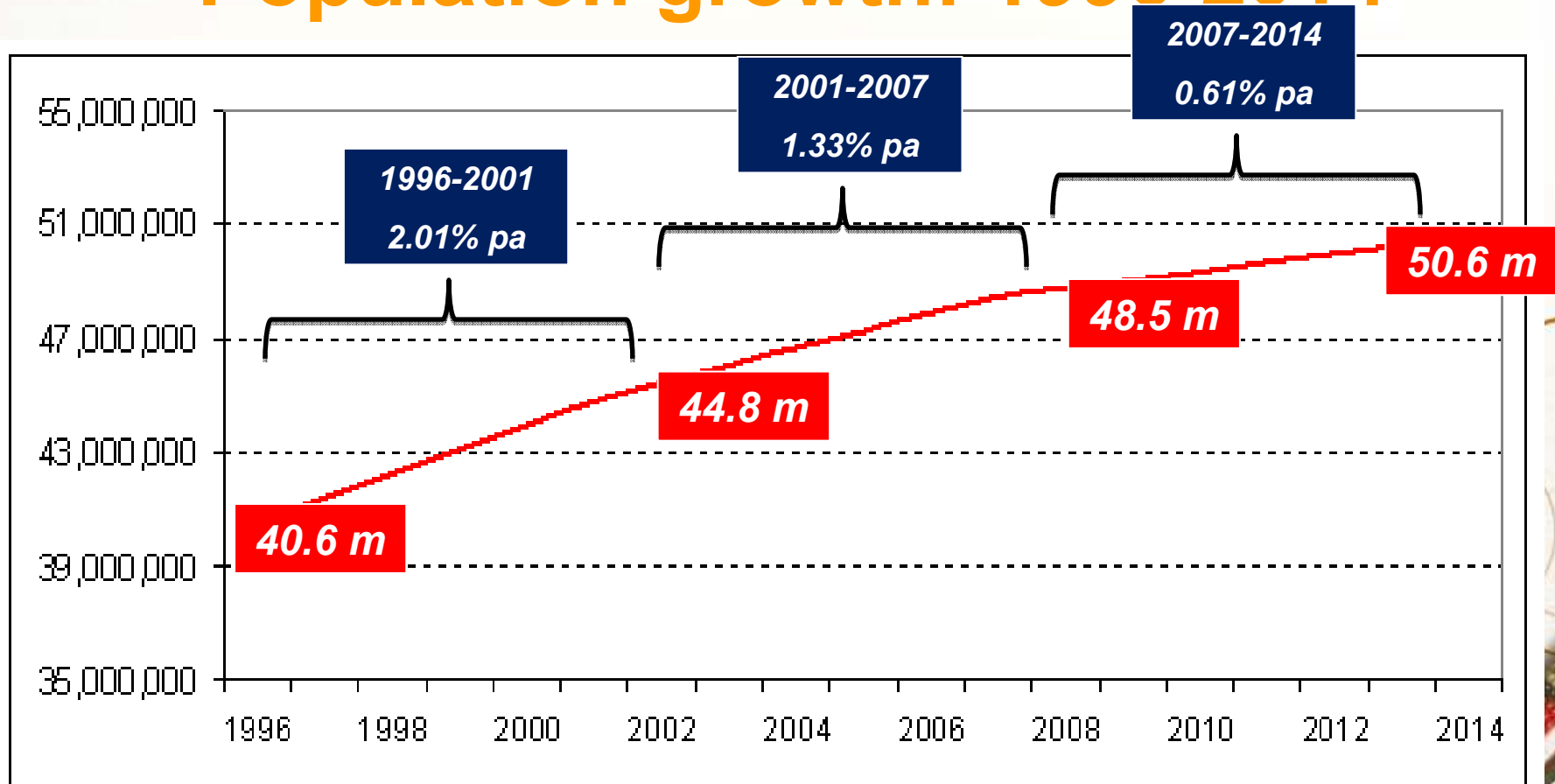
social development

Department:
Social Development
REPUBLIC OF SOUTH AFRICA

Population Policy

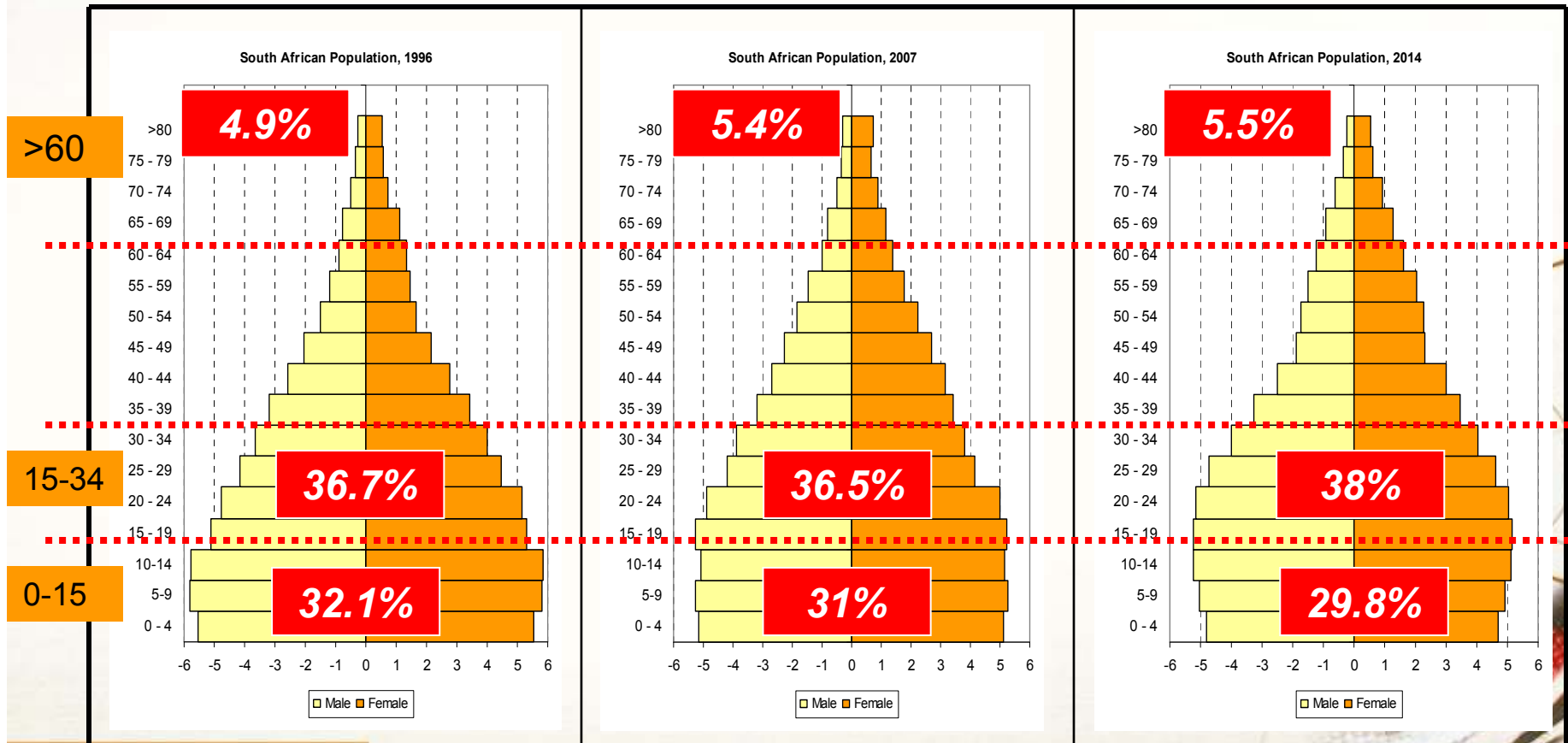
- The South Africa Population policy endorses and is heavily influenced by the vision encapsulated in the ICPD Programme of Action;
- **Vision:** Establishment of a society that provides a high and equitable quality of life to all South Africans, and in which population trends are commensurate with sustainable socio-economic and environmental development
- **Goal:** To align population trends with achievement of sustainable human development
- Various **concerns** raised based on data available at the time, outlining state of SA population on the dawn of democracy and after the ravages of Apartheid.
- Three main **objectives** stated
- 24 Major **strategies** proposed to achieve objectives

Population growth: 1996-2014



- Population growing slower
- Population structure changing

SA Population pyramids: 1996, 2007 and 2014



Population growth and Structure

Population Characteristics	1996*	2001*	2007**	2014***
% of population < 15	34.3	32.1	31.0	29.8
% 15-34 (Youth)	36.7	36.8	36.5	38.0
% of population 15 -64	60.8	63.0	63.6	64.8
% of population >60	4.8	4.9	5.4	5.5
Dependency ratio	0.64		0.57	0.54
Household size	4.5	3.9	3.9	
Median age	22.07	22.13	24.29	



Poverty and Inequality

	1995	2005	
Poverty headcount (R322 pm)	52.5%	48%	↓
Gini Coefficient	0.64	.69	↑
Electricity for lighting	58%	80%	↑
	1996	2008	
Toilet equivalent or above RDP std	52%	73%	↑
Social Grant recipients	2.4m	13.0m	↑

MAIN FINDING

- Income poverty declined in both real and relative terms, inequality however increased (Gini 0.64-0.69)
- Disproportion impact on Africans, rural households, females and female headed households.
- Asset and Human capital poverty improved significantly.

RECOMMENDATIONS

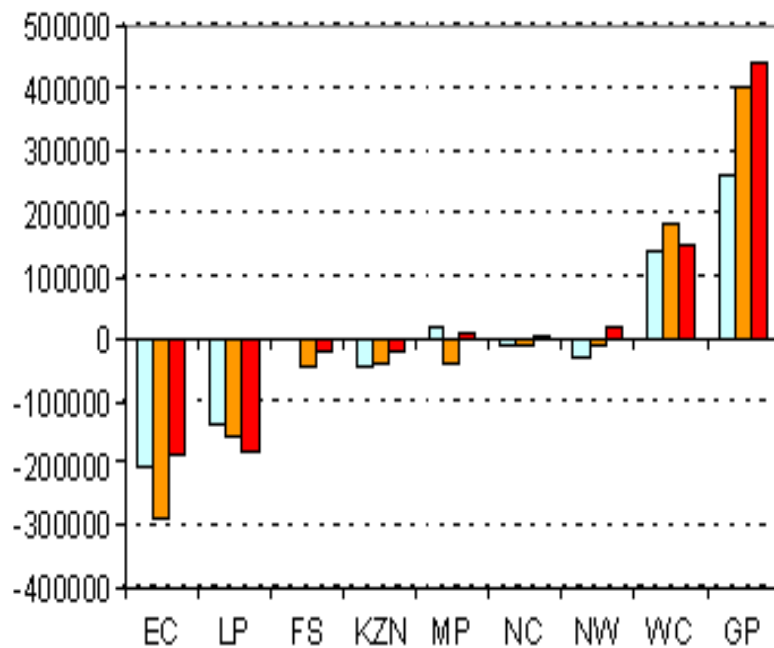
- Address persistent and widening income inequalities
- Maintain and expand the social welfare net while seeking more sustainable solutions to unemployment and poverty
- Improve targeting of government interventions to optimize effectiveness and efficiency



social development

Department:
Social Development
REPUBLIC OF SOUTH AFRICA

Migration and Urbanisation



MAIN FINDING

- Spatial distribution of population (and accompanying socio-economic inequality) still reflective of apartheid planning. In-migration into industrial areas, from largely under developed rural areas

RECOMMENDATIONS

- Step up rural development programmes as an end to itself rather than deterrence to out-migration
- Improve understanding of social cohesion and develop programmes to promote the integration of social cohesion into local planning as an instrument to enhance service delivery
- Improve the availability of demographic information on migration at all levels;

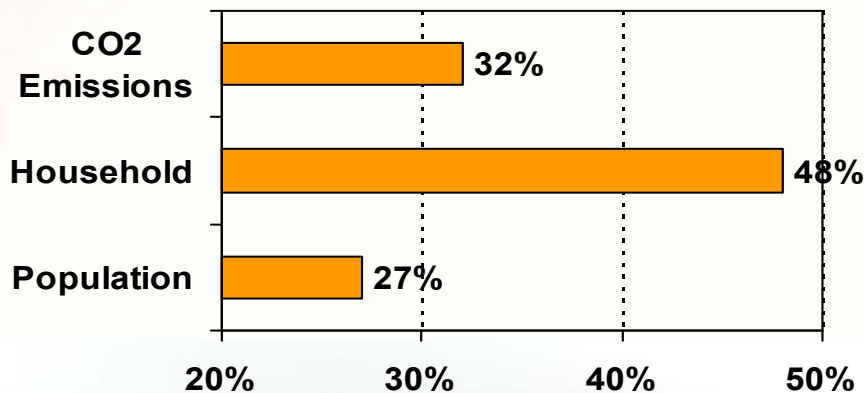


social development

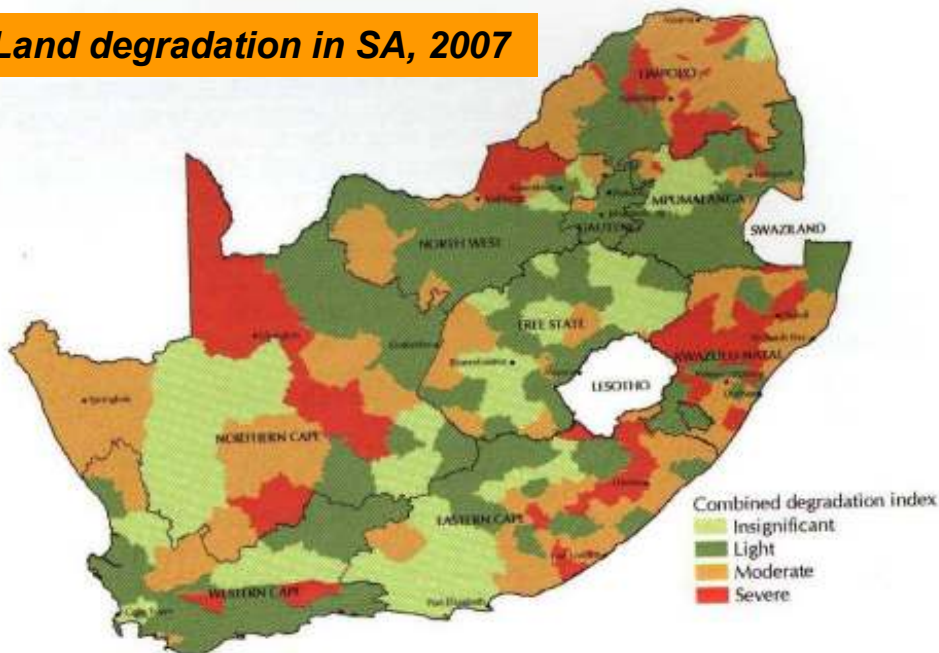
Department:
Social Development
REPUBLIC OF SOUTH AFRICA

Population, Environment and Development

Increase in CO2 emissions vs population and household growth, 1990-2004



Land degradation in SA, 2007



MAIN FINDING

- Growth, distribution and development of the population impacting on the environment and its capacity to sustain life.
- Environment conditions impact proportionately more negatively on poor South Africans and those living in rural areas.

RECOMMENDATIONS

- Take appropriate preventative and mitigating actions to address the impact of climate change.
- Balance the demand for energy with the need to minimize the damaging impact of energy generation upon human health and the environment.
- Strengthen and increase human capacity required for the implementation of policy initiatives at the population, environment and development interface

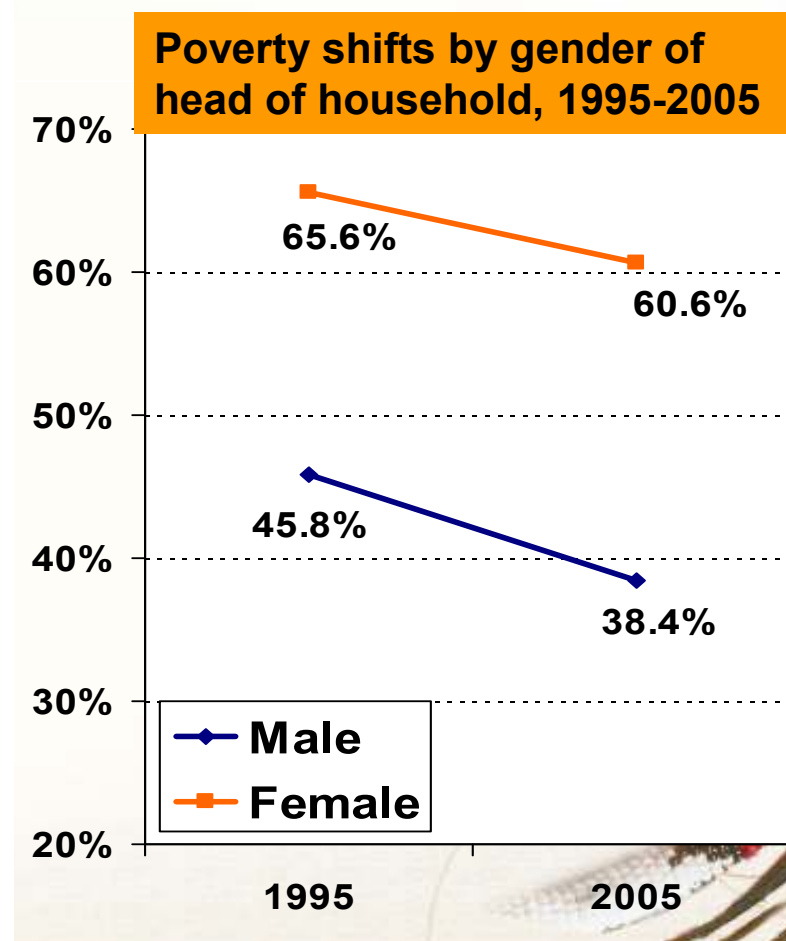
Gender equality and equity

MAIN FINDINGS

- Poverty disproportionately female phenomenon. Individuals in female headed family more vulnerable
- Unemployment much higher for females than males (26.3% compared to 20% for males in 2008). Women consequently more dependant on survivalist activities in informal sector – low wages, insecurity – increased vulnerability.
- Persistence of GBV

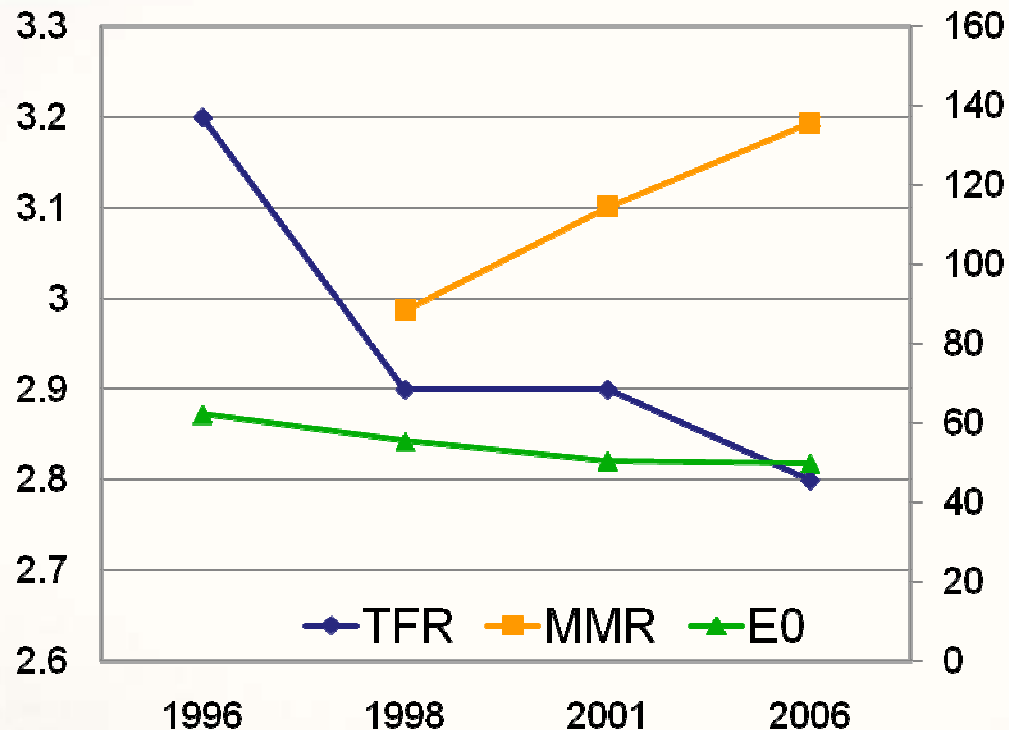
RECOMMENDATIONS

- Improve the implementation of legislation and policies
- Address GBV
- Continue empower of women and providing them with more choices through expanded access to education, health services, skills development, employment and involvement in decision-making at all levels key to ICPD approach to development;



Sexual and Reproductive Health and Rights

Total Fertility , Maternal Mortality (per 100,000) and Life Expectancy for South Africa



MAIN FINDING

- Improved access to SRH services since 1998 undermined by decreased life expectancy and increased MMR, both linked to HIV & AIDS

RECOMMENDATIONS

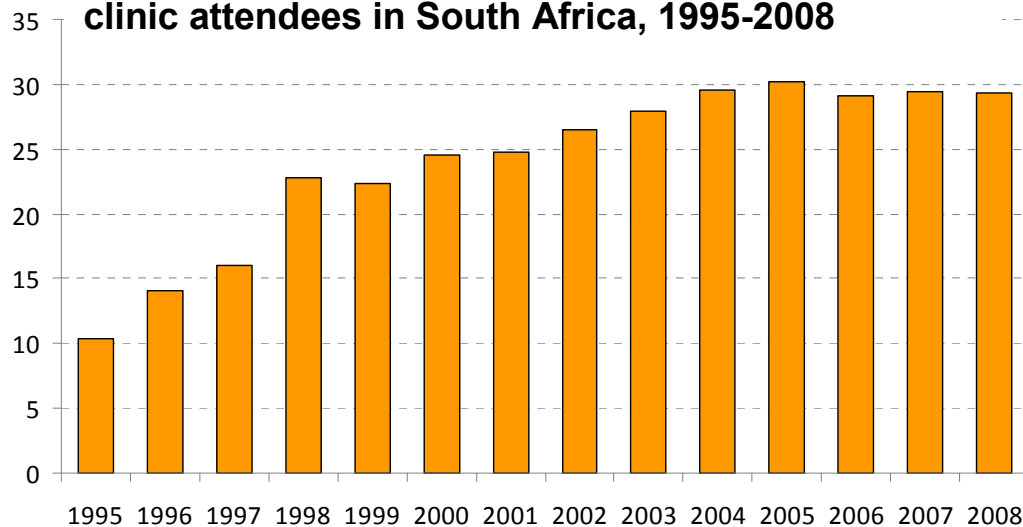
- Improve women's access to and use of effective SRH services. Emphasize adolescents, youth and rural women. Continue to promote responsible, healthy reproductive lifestyles and behaviour among high risk groups and the youth.
- Strengthen commitment to and enhancing national capacities and mechanisms for the collection, analysis, interpretation and dissemination of application information.

Maternal Mortality increased: Stats SA 88-136/100,000 (1999-2002)

Infant and Child (under 5) mortality remained high yet relatively constant at about 43 and 16/1000 respectively in 2003

HIV & AIDS

National HIV prevalence trends among antenatal clinic attendees in South Africa, 1995-2008



MAIN FINDING

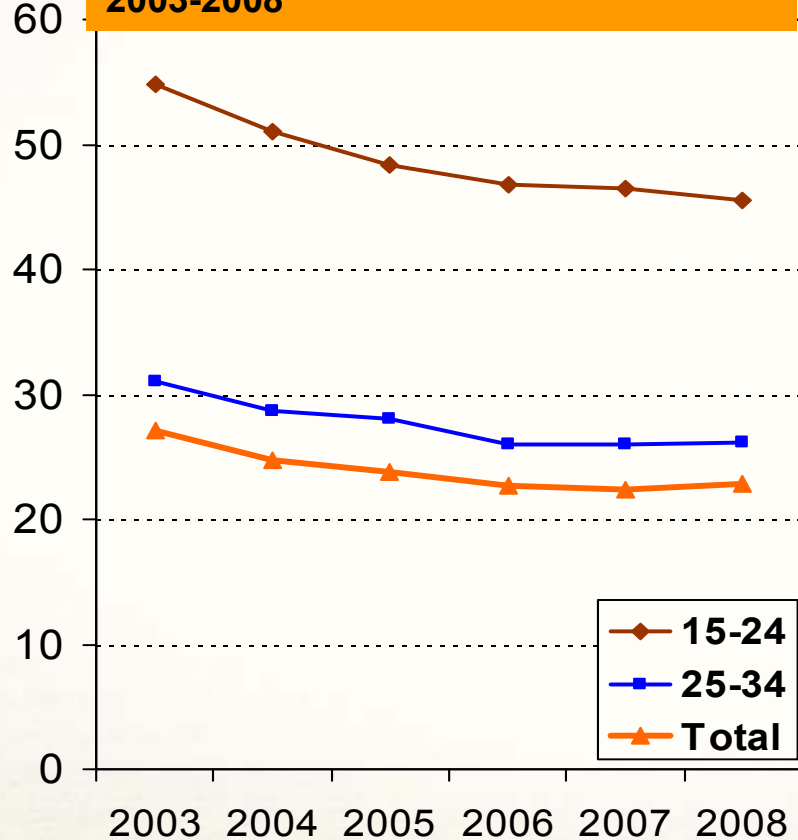
HIV & AIDS continues to pose serious health and development challenges. Young women (20-29) disproportionately affected. Male attitudes and behaviours key. Benefits of ART becoming apparent i.t.o improving life expectancy and curbing orphanhood.

RECOMMENDATIONS

- Improve the social and economic status of women (particularly youth) in order to decrease their vulnerability, and to increase the ability of households to deal with the impact of HIV and Aids.
- Strengthen commitment to and enhancing national capacities and mechanisms for the collection, analysis, interpretation and dissemination of HIV and AIDS and population research data, and the use of such data and information to inform policy making and development planning.

Youth

Youth unemployment compared to total unemployment in South Africa, 2003-2008



MAIN FINDING

- Despite accounting for 1/3 of all working age persons, youth only account for 12% of all employed persons – much higher unemployment rate.
- Attributed to economy's inability to absorb new entrants, but possibly also youth's inability to master necessary skills to be competitive.
- Undermining opportunity to reap demographic dividend.

MAIN RECOMMENDATIONS

- Youth remain marginalized and disproportionately affected by unemployment. Ease entry into the labour market through EPWP, internships, applicable training.
- Implement programmes to address youth and **demographic dividend** in South Africa and ensure that the window of opportunity is fully accessed.

Families, households and children

“Unbundling” of households

	1996	2007	96-07
Population	40.6m	48.5m	20%
Households	9.1m	12.5m	38%
Avg Household Size	4.6	3.9	-15%

MAIN FINDING

- Household growth has outstripped population growth leading to a general decline in average household size (4.6 in 1996 to 3.9 in 2007). Leads to a change in household composition and impacts on policy. Cumulative earning eroded, increasing number of households under the poverty line.
- 50% of families headed by single parent, usually women.

MAIN RECOMMENDATIONS

- Undertake regular demographic research to obtain trends on all aspects of families (as oppose to only households) and of children in the country on national, provincial and district level.
- Integrate family concerns into all Population, Environment and Development interventions;



Conclusion

- Remarkable progress in achieving objectives of ICPD+15 and Population Policy
- However, many challenges remain, amongst which are:
 - **Youth**: Addressing issues of concern to one of the fastest growing sections of society (youth) and reaping the demographic dividend
 - **Gender**: Optimal utilization of and vigorous protection for ½ the population should be addressed

Conclusion

- **HIV & AIDS**: continue to strengthen prevention and treatment programmes, with particular focus on protecting women, and establishing male responsibility.
- **Migration and PED**: Continue to reduce backlogs in urban infrastructure and social services, and adequately provide for future increases in these areas. Establish rural development programmes as measures on to their own, rather than means to stop urbanisation. Link patterns and settlement and production with environmental sustainability.

Strategic Focus 2009-2014

Based on the analysis of the review, the following critical focus areas were selected:

- Youth
- Gender
- HIV & Aids and Health
- Local population trends (including migration), environment and development (especially in rural areas)